



# Whenuapai Senior Education 2023



DEVELOPING FUTURE PATHWAYS

EXTENSIVE SPORT OPTIONS



TECHNOLOGY SUBJECTS

EOTC - EDUCATION OUT OF THE CLASS

# WHAT MAKES A GREAT YEAR 7 & 8 PROGRAMME?

LAST CHANCE TO GET THE BASICS FOR HIGH SCHOOL

CAMPS

FRIENDS

CHANGE AND A CHANCE TO DEVELOP RESILIENCE

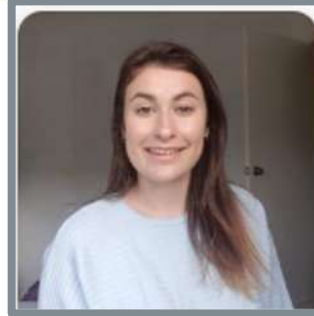
OPTIONS AND CHOICE

LEADERSHIP OPPORTUNITIES

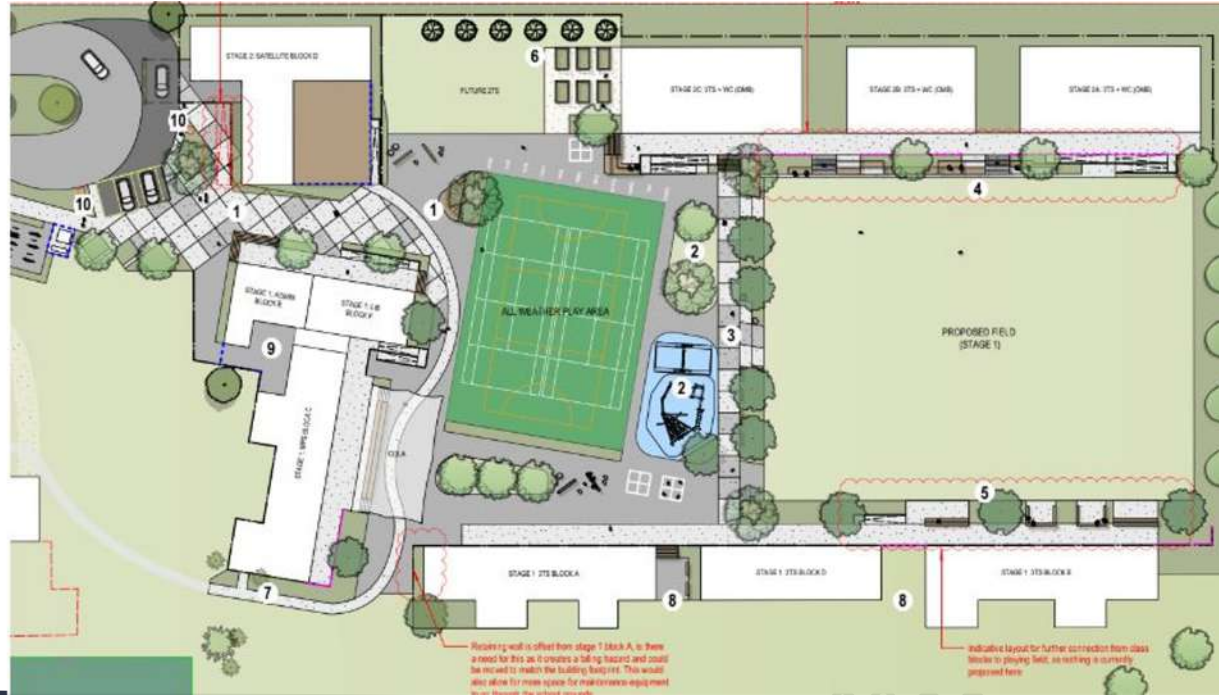
# VISION

**Our vision for Whenuapai Senior Campus (WSC) is to prepare our tamariki for any secondary school pathway.**

**Our well-rounded students will develop a wide range of high academic, social and sporting capabilities whilst also growing leadership skills and learner agency all through our unique WSC local curriculum.**



# A PURPOSE BUILT SITE



- ❖ Multipurpose space
- ❖ Basketball/Netball Turf
- ❖ Terraced sports field
- ❖ Common Rooms
- ❖ Break out rooms, quiet study spaces, single cell classes, with collaborative flexibility
- ❖ Brand new senior playground
- ❖ Expert Design Technology spaces



# KAITIAKITANGA

DISPERSAL FIELDS



*Apodanema zelandicum*  
Dia



*Arthrocnemum divaricatum*  
Rangwaea



*Carex diococoides*  
Small Sedge



*Carex acuta*  
Puka



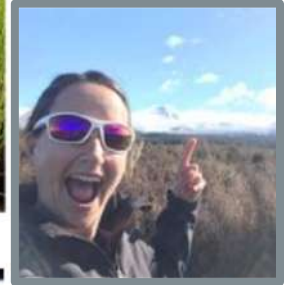
*Carex hololepis*  
Orange Sedge



*Cyperus latifolius*  
Shovel Unbracted Sedge



*Juncus pallidus*  
Shovel Rush



*Aeluropus kaulis*  
Tooties



*Carex geminata*  
Cutty Grass



*Coprosma stricta*  
Muriakau



*Coprosma robusta*  
Karama



*Cordyline australis*  
Cabbage Tree



*Diackiastrum aphyllatum*  
Tall Spikenard



*Hibbe stricta*  
Karomako

## KAITIAKITANGA - GUARDIANSHIP OF THE NEW LAND

- Environmental Action - school site and community wide
- Te Reo Maori / Tikanga



**1. PAVING PATTERNS**

Integrated into the entryway, previous paving can be introduced with patterns that represent local Māori Whenua values

**2. CULTURAL FEATURES/SCULPTURES**

Large cultural feature of the entry to signify the school's entryway and connect further into the site and the wetland

**3. PATTERNING WITHIN CONCRETE**

Introducing etchings and patterns into the concrete throughout the school as a means of story telling and wayfinding

**4. STEEL CUTOUTS**

Cutouts for both cultural and educational purposes can be implemented throughout the site

**5. CULTURAL PLANTING/VISUAL CONNECTIONS**

Plant species with cultural significance and those found in wetlands to tie the entrance to this area of the site





View from within the school looking out to the entry space



Portions of hardscape are angled towards the wetland area to provide a visual link

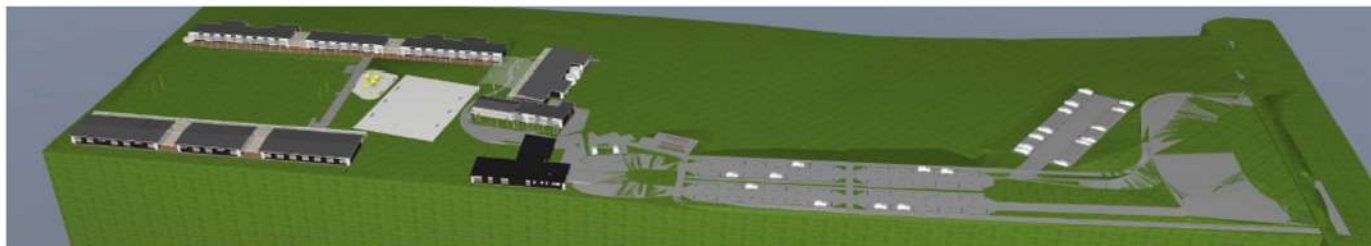


Cultural feature to create a focal node at entrance



Seating provided to create a waiting space for school pick up and additional teaching space





VIEW FROM THE NORTH ROAD ENTRY ON WEST ACCESS TO BUILDING BLOCKS ON EAST



VIEW FROM THE SOUTH M.P.S. & BUILDING BLOCKS AROUND THE HEART & SPORTS FIELD



VIEW FROM THE SOUTH WEST M.P.S. TEACHING SPACE BLOCKS AROUND THE HEART ADMIN & SATELLITE IN TO THE NORTH





# CORE CURRICULUM

Preparation for High School & changes in NCEA

## MATHS

- PRIME
- Extension
- Remedial Maths - TA Programmes

## Literacy

- WTB - digital tool
- WTB - programme
- Reading strategies
- The Code
- Liz Kane - decodables (senior learning support)

## Inquiry

- Exhibitions
- Developed community Action inquiries
- STEAM
- Problem solving



Our year 8's will be well prepared for beyond the school gate,  
feeling confident about the next steps in their future.

# TECHNOLOGY AND SPECIALIST SUBJECTS

Combined with attending Taupaki technology we will add:

- ❖ Design Technology + Hard and Soft Tech
- ❖ Garden to Table - Cooking
- ❖ Arts Visual / Drama / Music

All of these will be in our multipurpose room which can be accessed by teachers and students for project based learning also.



Plus...

Education Outside The Classroom  
(EOTC) options that utilise our  
local environment.



# CAMPS

- ❖ Term 1 - Camp out
- ❖ Term 2 - Finlay Park

Parent helpers needed!



# AIMS - AUCKLAND INTERMEDIATE COMP - TAURANGA

September 3-9 2022  
LOCK IT IN!



SPORTS  
Hākinakina

- ATHLETES WITH DISABILITIES
- BADMINTON
- BASKETBALL
- BMX
- CANOE SPORT
- CROSS COUNTRY
- FOOTBALL
- FUTSAL
- GOLF
- GYMNASICS
- HIP HOP
- HOCKEY
- INDOOR BOWLS
- INDOOR CRICKET
- MOUNTAIN BIKING
- NETBALL
- ROCK CLIMBING
- RUGBY
- SQUASH
- SWIMMING
- TABLE TENNIS
- TENNIS
- WATER POLO
- YACHTING

<https://www.nzaimsgames.co.nz/>



## GETTING THERE AND BACK..

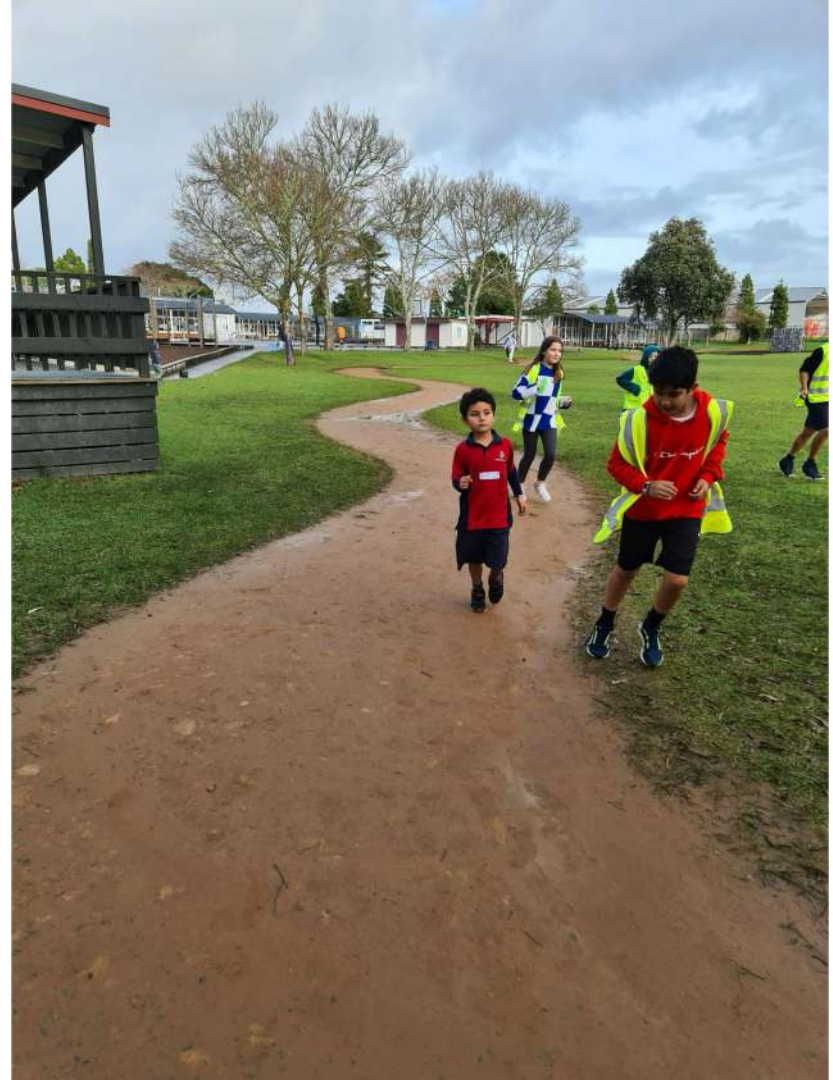
Auckland Transport will provide buses from Redhill, Massey to both Whenuapai sites and in between.

During school hours we will use our new school vans to continue to develop the close relationships across years 1 - 8 and in and about our community.



## LEADERSHIP OPPORTUNITIES

- Tuakana/Teina with the support of buses
- Planned days on the home site
- More teams, less students = more opportunities
- House and prefect leadership



# AROHANUI SPECIAL SCHOOL



Martin, Speech Language  
Therapist

